



Government of India  
Ministry of Earth Sciences



India Meteorological Department

### PRESS RELEASE-3

Time of issue: 1430 hours IST

Dated: 26<sup>th</sup> November, 2024

**Sub: Depression intensified into a deep depression over Southwest Bay of Bengal**

Yesterday's depression over central parts of south Bay of Bengal and adjoining East Equatorial Indian Ocean moved west-northwestwards and intensified into a **Deep Depression** over Southwest Bay of Bengal and lay centred at 0830 hours IST of today, the 26<sup>th</sup> November 2024 over the same region near latitude 6.3°N and longitude 82.8°E, about 310 km southeast of Trincomalee, 590 km south-southeast of Nagappattinam, 710 km south-southeast of Puducherry and 800 km south-southeast of Chennai.

It is very likely to continue to move north-northwestwards and intensify further into a cyclonic storm on 27<sup>th</sup> November. Thereafter, it will continue to move north-northwestwards towards Tamil Nadu coast skirting Sri Lanka coast during subsequent 2 days.

A continuous watch is being maintained for the movement and intensification of system.

Forecast track and intensity are given in the following table:

Date/ Time (IST)	Position (Lat. °N/ long. °E)	Maximum sustained surface wind speed (Kmph)	Category of cyclonic disturbance
26.11.24/0830	6.3/82.8	50-60 gusting to 70	Deep Depression
26.11.24/1730	7.2/82.4	55-65 gusting to 75	Deep Depression
27.11.24/0530	8.2/82.0	55-65 gusting to 75	Deep Depression
27.11.24/1730	9.3/81.7	60-70 gusting to 80	Cyclonic Storm
28.11.24/0530	10.2/81.5	65-75 gusting to 85	Cyclonic Storm
28.11.24/1730	11.0/81.4	65-75 gusting to 85	Cyclonic Storm
29.11.24/0530	11.8/81.3	65-75 gusting to 85	Cyclonic Storm

#### **Warnings:**

##### **(i) Rainfall Warning:**

**Tamil Nadu & Puducherry:** Heavy to very heavy rainfall at a few places with extremely heavy rainfall at isolated places over Tamil Nadu & Puducherry on 26<sup>th</sup> & 27<sup>th</sup> and heavy to very heavy rainfall at isolated places is likely on 28<sup>th</sup> and heavy rainfall at isolated places on 29<sup>th</sup> November.

**Andhra Pradesh & Rayalaseema:** Light to moderate rainfall at many places with heavy rainfall at isolated places is likely on 26<sup>th</sup> to 27<sup>th</sup> November and heavy to very heavy rainfall on 28<sup>th</sup> and 29<sup>th</sup> November.

**Contact:** Cyclone Warning Division, Office of the Director General of Meteorology, India Meteorological Department, Ministry of Earth Sciences, E-mail: [cyclonewarningdivision@gmail.com](mailto:cyclonewarningdivision@gmail.com), Website: [rsmcnewdelhi.imd.gov.in](http://rsmcnewdelhi.imd.gov.in), Spatial rainfall distribution: Isolated: <25%, A few: 26-50%, Many: 51-75%, Most: 76-100%, Rainfall amount (mm): Heavy rain: 64.5 – 115.5, Very heavy rain: 115.6 – 204.4, Extremely heavy rain: 204.5 or more.

**(ii) Wind warning:**

- Squally wind speed reaching 50-60 kmph gusting to 70 kmph is likely to prevail over southwest Bay of Bengal and along & off Sri Lanka coast till 27<sup>th</sup> morning. It is likely to increase becoming Gale wind speed reaching 60-70 kmph gusting to 80 kmph over southwest Bay of Bengal and along & off Sri Lanka coasts from evening of 27<sup>th</sup> November till 29<sup>th</sup> November.
- Squally wind speed reaching 40-50 kmph gusting to 60 kmph is likely to prevail over adjoining areas of westcentral Bay of Bengal till 27<sup>th</sup> morning. It would increase gradually becoming 55-65 kmph gusting to 75 kmph over the same region till 29<sup>th</sup> November.
- Squally wind speed reaching 40-50 kmph gusting to 60 kmph is likely to prevail along & off Tamil Nadu- Puducherry and south Andhra Pradesh coasts till 27<sup>th</sup> morning. Thereafter, it is likely to increase becoming 50-60 kmph gusting to 70 kmph from 27<sup>th</sup> evening till 29<sup>th</sup> November.

**(iii) Sea condition:**

- Rough to very Rough Sea condition is very likely to prevail over southwest Bay of Bengal and along & off Sri Lanka coast till 27<sup>th</sup> morning. It is likely to become high from 27<sup>th</sup> evening till 29<sup>th</sup> November.
- Rough to very rough Sea condition is very likely to prevail along and off Tamil Nadu- Puducherry and south Andhra Pradesh coasts till 29<sup>th</sup> November.
- Rough to very Rough Sea condition is likely to prevail over adjoining westcentral Bay of Bengal from 27<sup>th</sup> evening till 29<sup>th</sup> November.

**(iv) Fisherman warning:**

- Fishermen are advised not venture into
  - southwest Bay of Bengal and along & off Sri Lanka & Tamilnadu coasts till 29<sup>th</sup> November, 2024.
  - Adjoining areas of Westcentral Bay of Bengal and along & off south Andhra Pradesh coast during 27<sup>th</sup> to 29<sup>th</sup> November 2024.
- Fishermen out at sea are advised to return to coasts immediately.

**(v) Impact Expected [over Tamil Nadu – Puducherry and south Andhra Pradesh]**

- Localized Flooding of roads, water logging in low lying areas and closure of underpasses mainly in urban areas of the above region.
- Occasional reduction in visibility due to heavy rainfall.
- Disruption of traffic in major cities due to water logging in roads leading to increased travel time.
- Minor damage to kutch roads.
- Damage to horticulture and standing crops in some areas due to inundation.

**(vi) Action Suggested**

- Fishermen are advised not venture into
  - southwest Bay of Bengal and along & off Sri Lanka & Tamilnadu coasts till 29<sup>th</sup> November, 2024.
  - Adjoining areas of Westcentral Bay of Bengal and along & off south Andhra Pradesh coast during 27<sup>th</sup> to 29<sup>th</sup> November 2024.

**Contact: Cyclone Warning Division, Office of the Director General of Meteorology, India Meteorological Department, Ministry of Earth Sciences, E-mail: [cyclonewarningdivision@gmail.com](mailto:cyclonewarningdivision@gmail.com), Website: [rsmcnewdelhi.imd.gov.in](http://rsmcnewdelhi.imd.gov.in), Spatial rainfall distribution: Isolated: <25%, A few: 26-50%, Many: 51-75%, Most: 76-100%, Rainfall amount (mm): Heavy rain: 64.5 – 115.5, Very heavy rain: 115.6 – 204.4, Extremely heavy rain: 204.5 or more.**

- Fishermen out at sea are advised to return to coasts immediately
- Check for traffic congestion on your route before leaving for your destination.
- Follow any traffic advisories that are issued in this regard.
- Avoid going to areas that face the water logging problems often.
- Special care may be taken for fishing ponds and poultries over coastal areas.
- Avoid staying in vulnerable structure.

**(vii) Agromet advisories [over Tamil Nadu – Puducherry and Andhra Pradesh]**

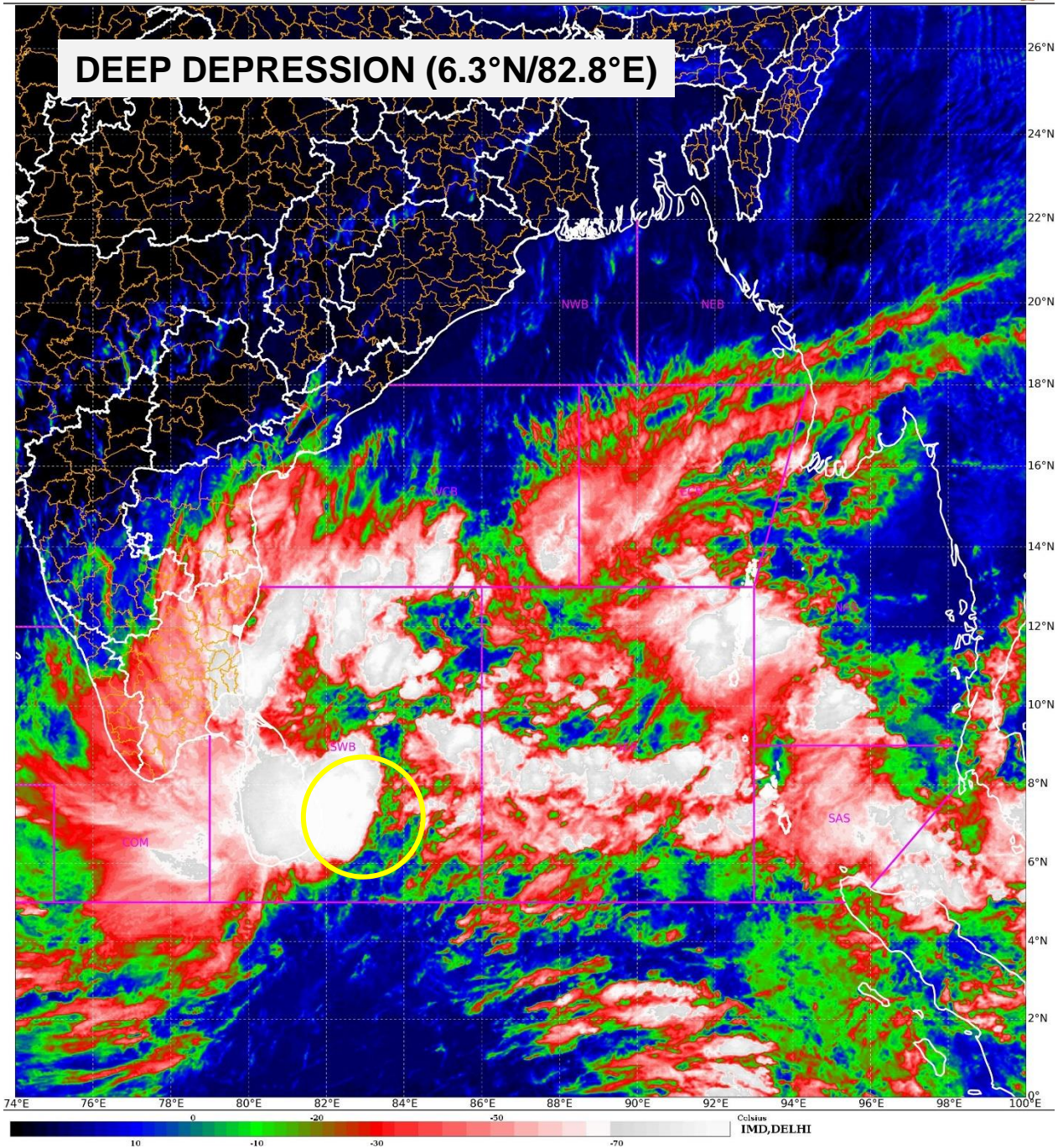
- Provide adequate drainage facilities for the removal of excess water from rice, cotton, sugarcane, turmeric and vegetable fields, coconut and banana orchards. Provide mechanical support to banana plants to prevent lodging.
- Make arrangements to drain out excess water from the standing crop fields and fruit orchards in Kerala and Coastal Andhra Pradesh.
- Harvest the matured crops and keep it in safe place.
- Provide mechanical support to horticultural crops and staking to vegetables.

*All associated graphics have been kept in Annexure-I.*

*Next Press Release will be issued at 1430 hours IST of tomorrow, the 27th November, 2024.*

**Contact: Cyclone Warning Division, Office of the Director General of Meteorology, India Meteorological Department, Ministry of Earth Sciences, E-mail: [cyclonewarningdivision@gmail.com](mailto:cyclonewarningdivision@gmail.com), Website: [rsmcnewdelhi.imd.gov.in](http://rsmcnewdelhi.imd.gov.in), Spatial rainfall distribution: Isolated: <25%, A few: 26-50%, Many: 51-75%, Most: 76-100%, Rainfall amount (mm): Heavy rain: 64.5 – 115.5, Very heavy rain: 115.6 – 204.4, Extremely heavy rain: 204.5 or more.**

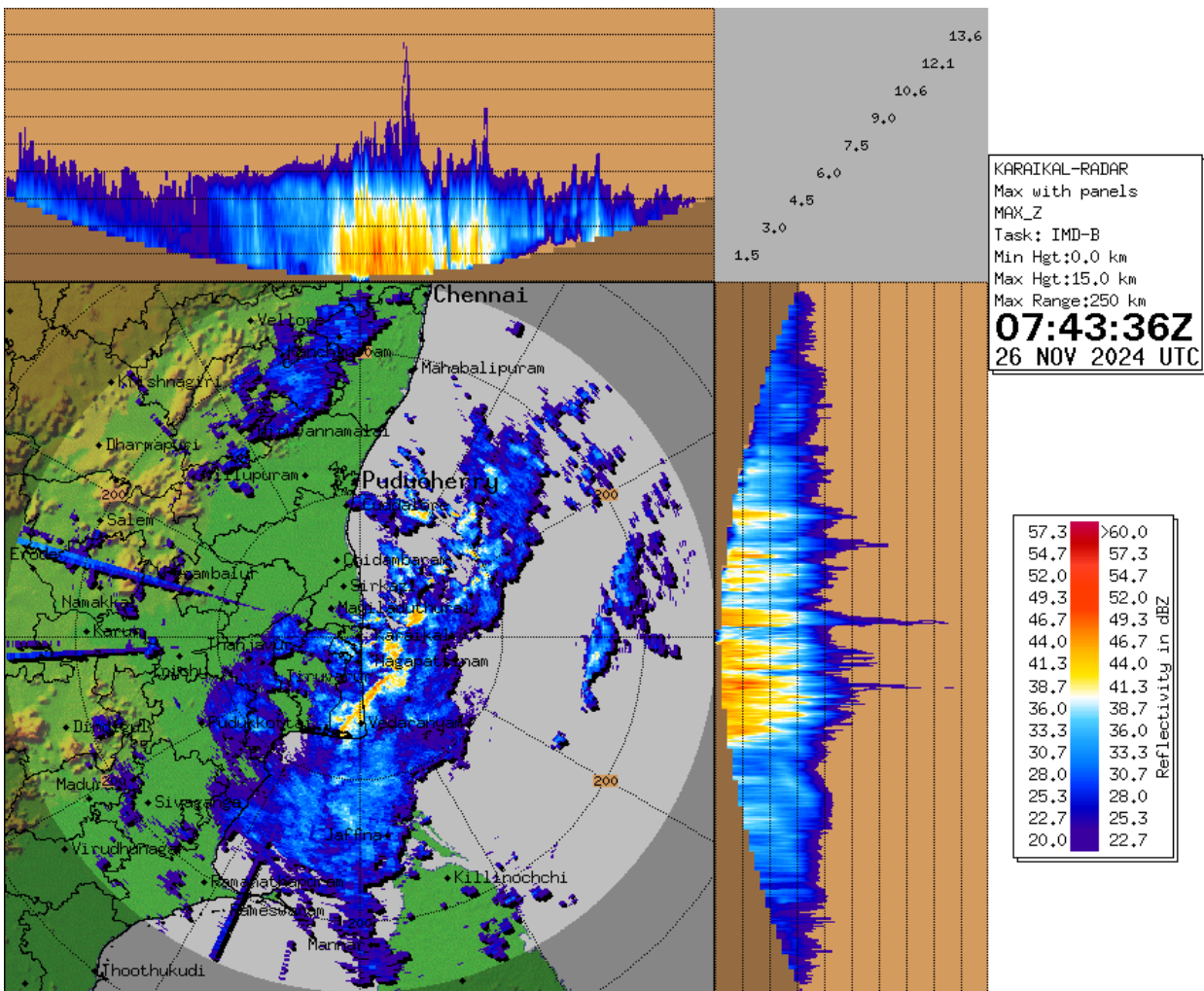




Contact: Cyclone Warning Division, Office of the Director General of Meteorology, India Meteorological Department, Ministry of Earth Sciences, E-mail: [cyclonewarningdivision@gmail.com](mailto:cyclonewarningdivision@gmail.com), Website: [rsmcnewdelhi.imd.gov.in](http://rsmcnewdelhi.imd.gov.in), Spatial rainfall distribution: Isolated: <25%, A few: 26-50%, Many: 51-75%, Most: 76-100%, Rainfall amount (mm): Heavy rain: 64.5 – 115.5, Very heavy rain: 115.6 – 204.4, Extremely heavy rain: 204.5 or more.



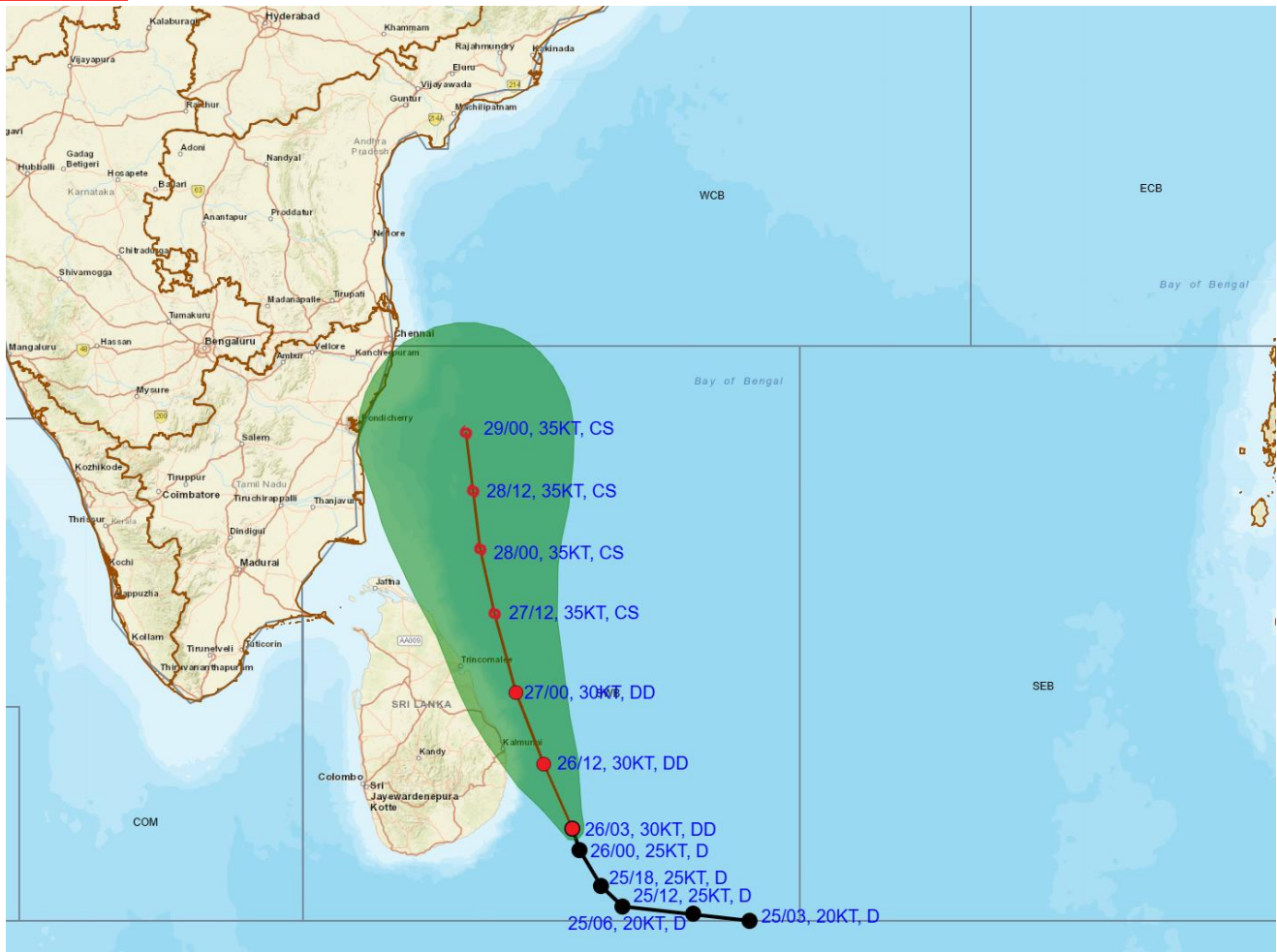
## Doppler Weather Radar Observations at Karaikal (Max Z)



Contact: Cyclone Warning Division, Office of the Director General of Meteorology, India Meteorological Department, Ministry of Earth Sciences, E-mail:[cyclonewarningdivision@gmail.com](mailto:cyclonewarningdivision@gmail.com), Website: [rsmcnewdelhi.imd.gov.in](http://rsmcnewdelhi.imd.gov.in), Spatial rainfall distribution: Isolated: <25%, A few: 26-50%, Many: 51-75%, Most: 76-100%, Rainfall amount (mm): Heavy rain: 64.5 – 115.5, Very heavy rain: 115.6 – 204.4, Extremely heavy rain: 204.5 or more.



**OBSERVED AND FORECAST TRACK ALONG WITH CONE OF UNCERTAINTY OF DEPRESSION OVER SOUTHWEST BAY OF BENGAL BASED ON 0300 UTC (0830 HRS. IST) OF 26<sup>TH</sup> NOVEMBER, 2024**



DATE/TIME : IN UTC  
 IST : UTC + 0530  
 KT : NAUTICAL MILE / HOUR = 1.85 KM / HOUR  
 LPA : LOW PRESSURE AREA  
 WML : WELL MARKED LOW PRESSURE AREA  
 D : DEPRESSION (17-27 KT)  
 DD : DEEP DEPRESSION (28-33 KT)  
 CS : CYCLONIC STORM (34-47 KT)  
 SCS : SEVERE CYCLONIC STORM (48-63 KT)  
 VSCS : VERY SEVERE CYCLONIC STORM (64-89 KT)  
 ESCS : EXTREMELY SEVERE CYCLONIC STORM (90-119 KT)  
 SuCS : SUPER CYCLONIC STORM ( $\geq 120$  KT)

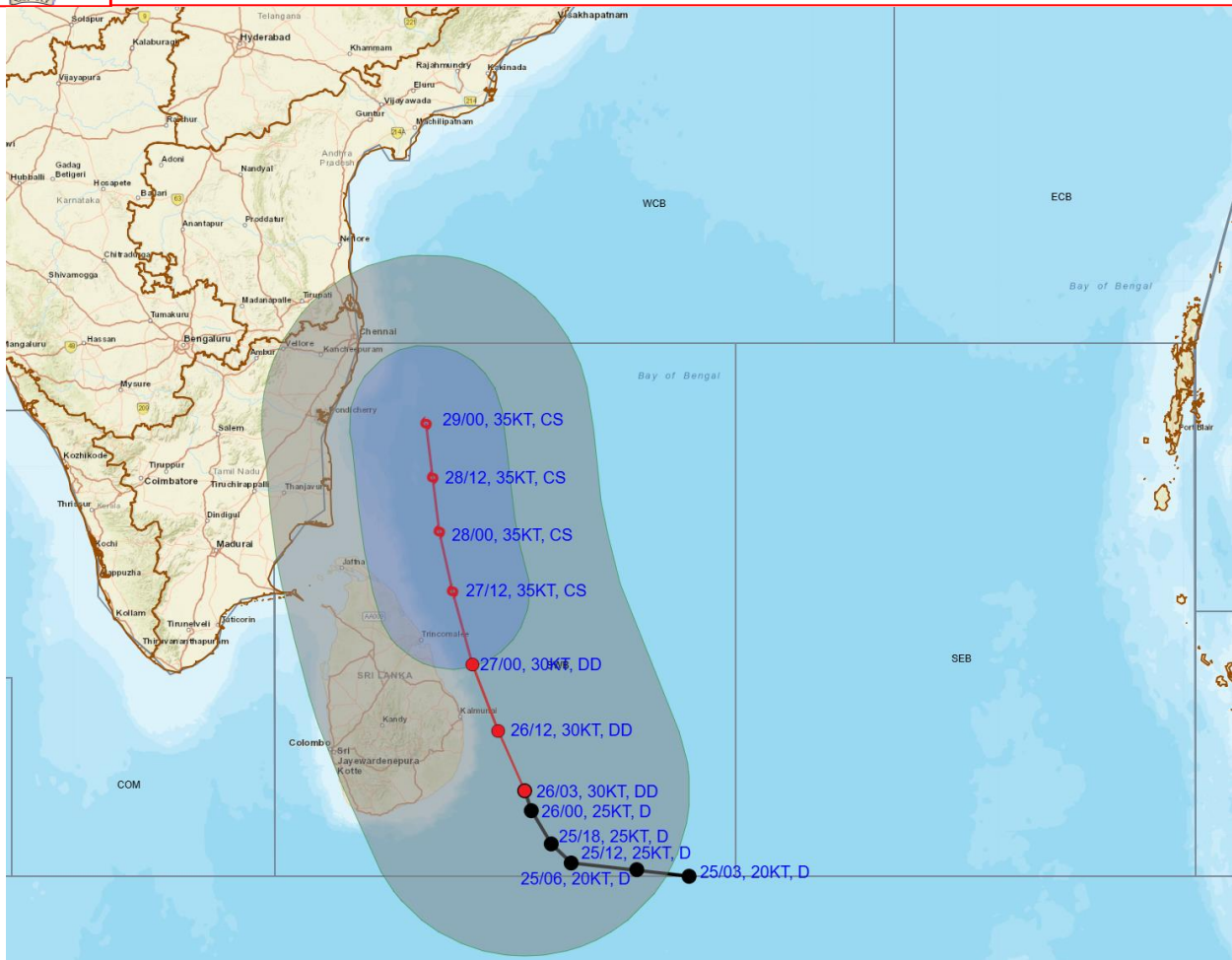
LESS THAN 34 KT  
 34-47 KT  
 $\geq 48$  KT  
 OBSERVED TRACK  
 FORECAST TRACK  
 CONE OF UNCERTAINTY

Forecast	DISTANCE (KM) AND DIRECTION FROM STATIONS					
	Date and Time (UTC)	BATTICALOA	TRINCOMALEE	NAGAPPATTINAM	PUDUCHERRY	CHENNAI/MINAMBAKKAM
	26.11.24/0300	190, SE	300, SE	590, SSE	710, SSE	790, SSE
	27.11.24/0000	70, NNE	100, ESE	370, SE	480, SSE	570, SSE
	28.11.24/0000	280, N	190, N	200, ESE	260, SE	340, SSE
	29.11.24/0000	460, N	360, N	200, NE	170, E	190, SE

Contact: Cyclone Warning Division, Office of the Director General of Meteorology, India Meteorological Department, Ministry of Earth Sciences, E-mail: cyclonewarningdivision@gmail.com, Website: [rsmcnewdelhi.imd.gov.in](http://rsmcnewdelhi.imd.gov.in), Spatial rainfall distribution: Isolated: <25%, A few: 26-50%, Many: 51-75%, Most: 76-100%, Rainfall amount (mm): Heavy rain: 64.5 – 115.5, Very heavy rain: 115.6 – 204.4, Extremely heavy rain: 204.5 or more.



**OBSERVED AND FORECAST TRACK ALONGWITH QUADRANT WIND DISTRIBUTION OF DEPRESSION OVER SOUTHWEST BAY OF BENGAL BASED ON 0300 UTC (0830 HRS. IST) OF 26<sup>TH</sup> NOVEMBER, 2024.**



DATE/TIME : IN UTC  
 IST : UTC + 0530  
 KT : NAUTICAL MILE S/HOUR = 1.85 KM/HOUR  
 LPA : LOW PRESSURE AREA  
 WML : WELL MARKED LOW PRESSURE AREA  
 D : DEPRESSION (17-27 KT)  
 DD : DEEP DEPRESSION (28-33 KT)  
 CS : CYCLONIC STORM (34-47 KT)  
 SCS : SEVERE CYCLONIC STORM (48-63 KT)  
 VSCS : VERY SEVERE CYCLONIC STORM (64-89 KT)  
 ESCS : EXTREMELY SEVERE CYCLONIC STORM (90-119 KT)  
 SuCS : SUPER CYCLONIC STORM ( $\geq 120$  KT)

● LESS THAN 34 KT  
 ○ 34-47 KT  
 ◐  $\geq 48$  KT  
 — OBSERVED TRACK  
 — FORECAST TRACK  
 — CONE OF UNCERTAINTY  
 AREA OF MAXIMUM SUSTAINED WIND SPEED:  
 ■ 28-33 KT (52-61 KMPH)  
 ■ 34-49 KT (62-91 KMPH)  
 ■ 50-63 KT (92-117 KMPH)  
 ■  $\geq 64$  KT ( $\geq 118$  KMPH)

**IMPACT OVER THE SEA**

MSW (knot/kmph)	Impact	Action
28-33 (52-61)	Very rough seas	Total suspension of fishing operations
34-49 (62-91)	High to very high seas	Total suspension of fishing operations
50-63 (92-117)	Very high seas	Total suspension of fishing operations
$\geq 64$ ( $\geq 118$ )	Phenomenal	Total suspension of fishing operations

Contact: Cyclone Warning Division, Office of the Director General of Meteorology, India Meteorological Department, Ministry of Earth Sciences, E-mail: [cyclonewarningdivision@gmail.com](mailto:cyclonewarningdivision@gmail.com), Website: [rsmcnewdelhi.imd.gov.in](http://rsmcnewdelhi.imd.gov.in), Spatial rainfall distribution: Isolated: <25%, A few: 26-50%, Many: 51-75%, Most: 76-100%, Rainfall amount (mm): Heavy rain: 64.5 – 115.5, Very heavy rain: 115.6 – 204.4, Extremely heavy rain: 204.5 or more.

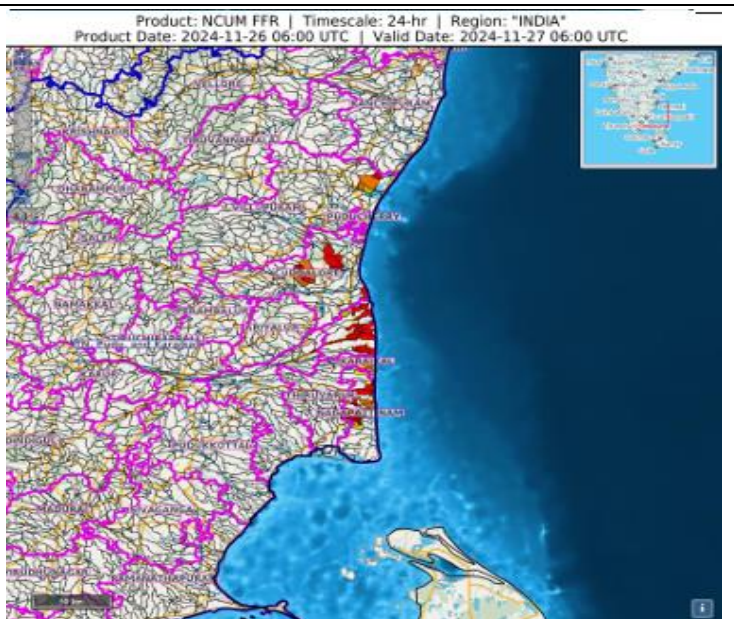


**24 hours Outlook for the Flash Flood Risk (FFR) till 1130 IST of 27-11-2024:**

**Low to Moderate flash flood risk** likely over few watersheds & neighbourhoods of following Met-subdivision in next 24 hours.

**Tamilnadu, Puducherry & Karaikal:**  
Cuddallur, Villupuram, Nagapattinum, Karaikal and Thiruvarur districts

Surface runoff/ Inundation may occur at some fully saturated soils & low-lying areas over AoC as shown in map due to expected rainfall occurrence in next 24 hours.



**Flash Flood Risk**

**High Risk (Take Action)**

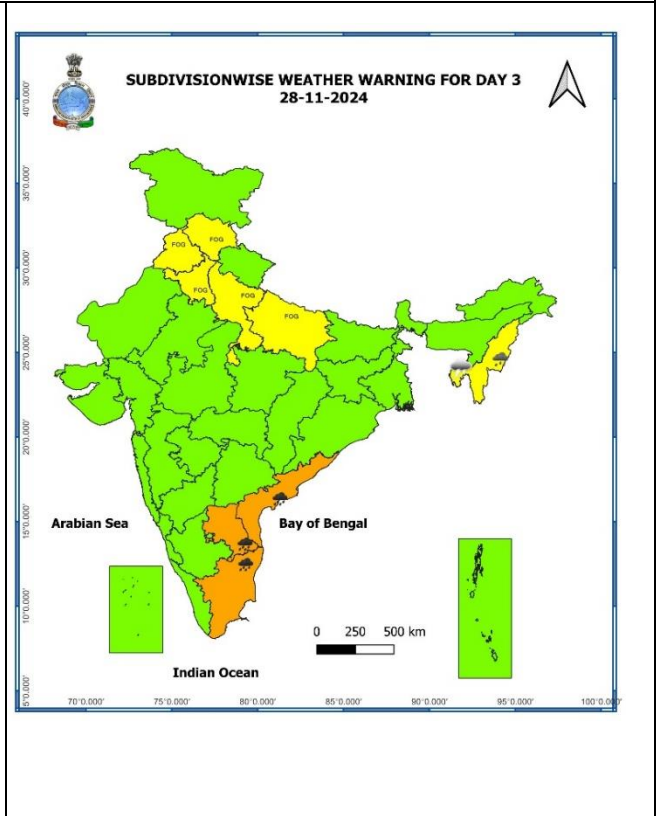
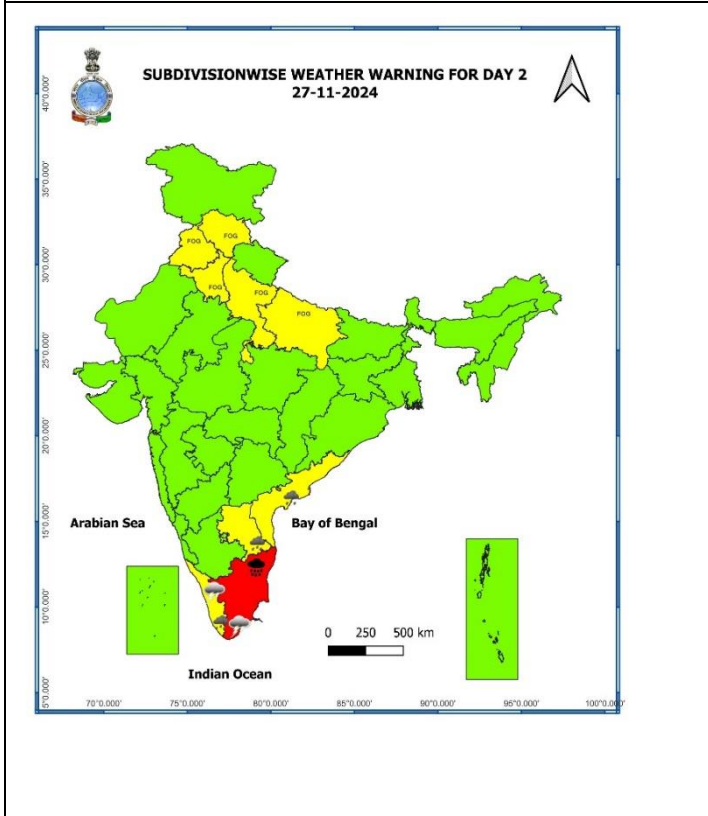
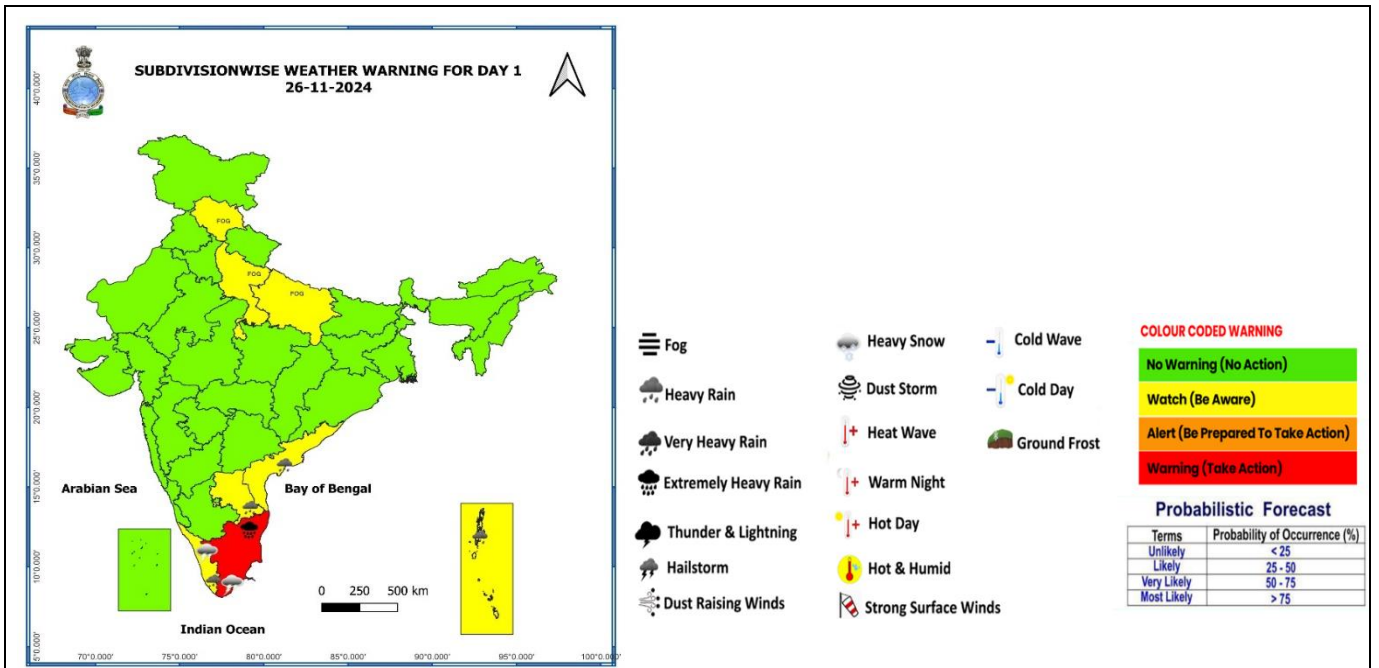
**Moderate Risk (Be Prepared)**

**Low Risk (Be Updated)**

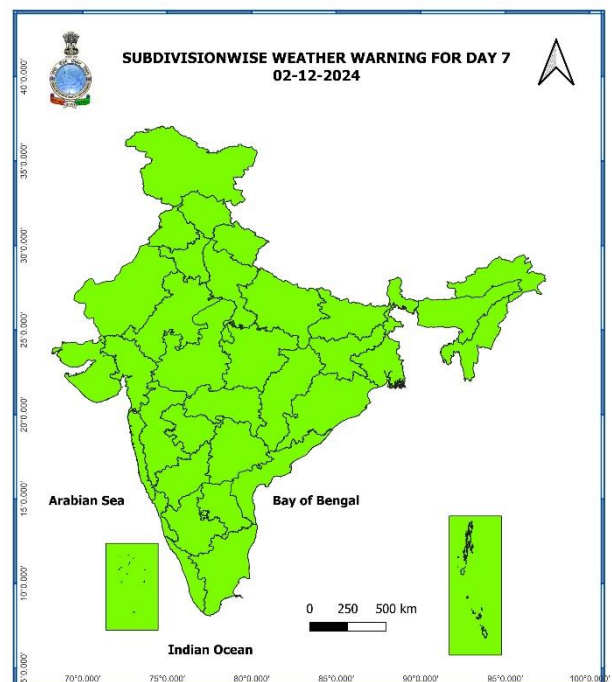
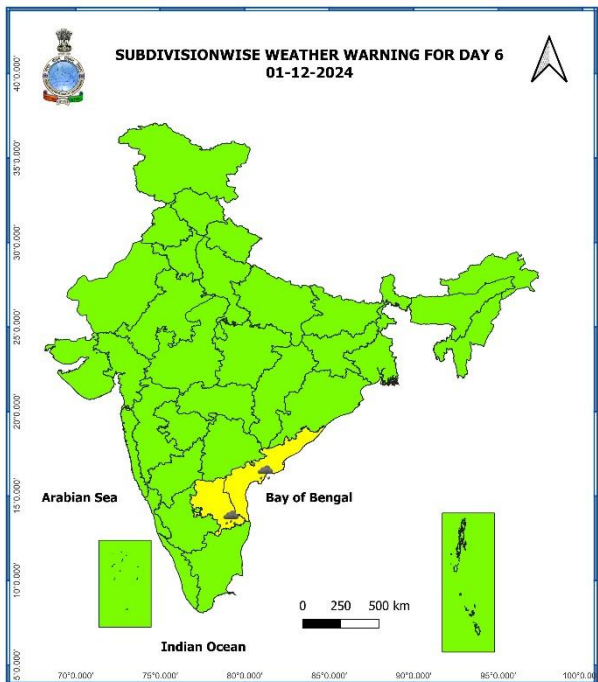
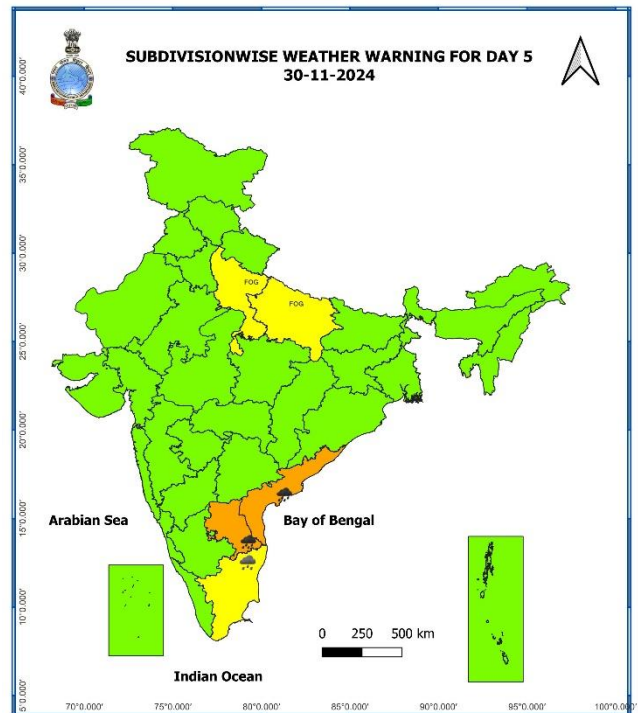
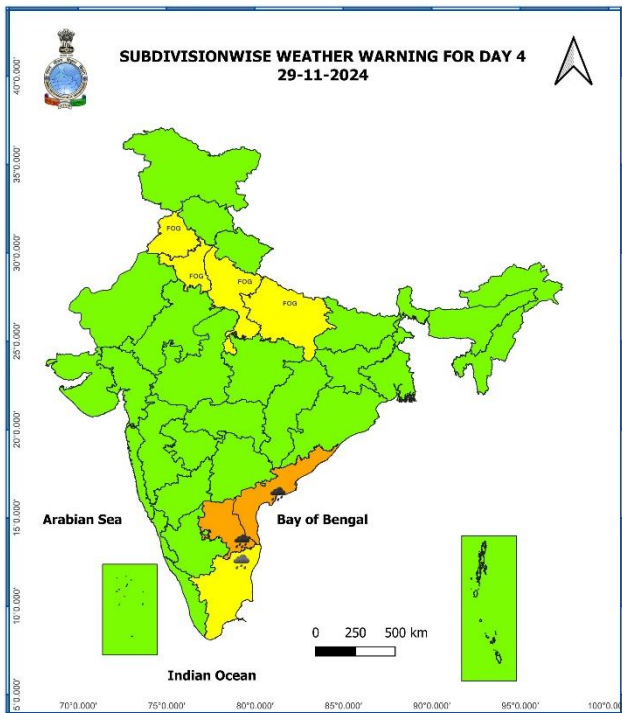
**Contact:** Cyclone Warning Division, Office of the Director General of Meteorology, India Meteorological Department, Ministry of Earth Sciences, E-mail:[cyclonewarningdivision@gmail.com](mailto:cyclonewarningdivision@gmail.com), Website: [rsmcnewdelhi.imd.gov.in](http://rsmcnewdelhi.imd.gov.in), Spatial rainfall distribution: Isolated: <25%, A few: 26-50%, Many: 51-75%, Most: 76-100%, Rainfall amount (mm): Heavy rain: 64.5 – 115.5, Very heavy rain: 115.6 – 204.4, Extremely heavy rain: 204.5 or more.



## Weather Warning Graphics



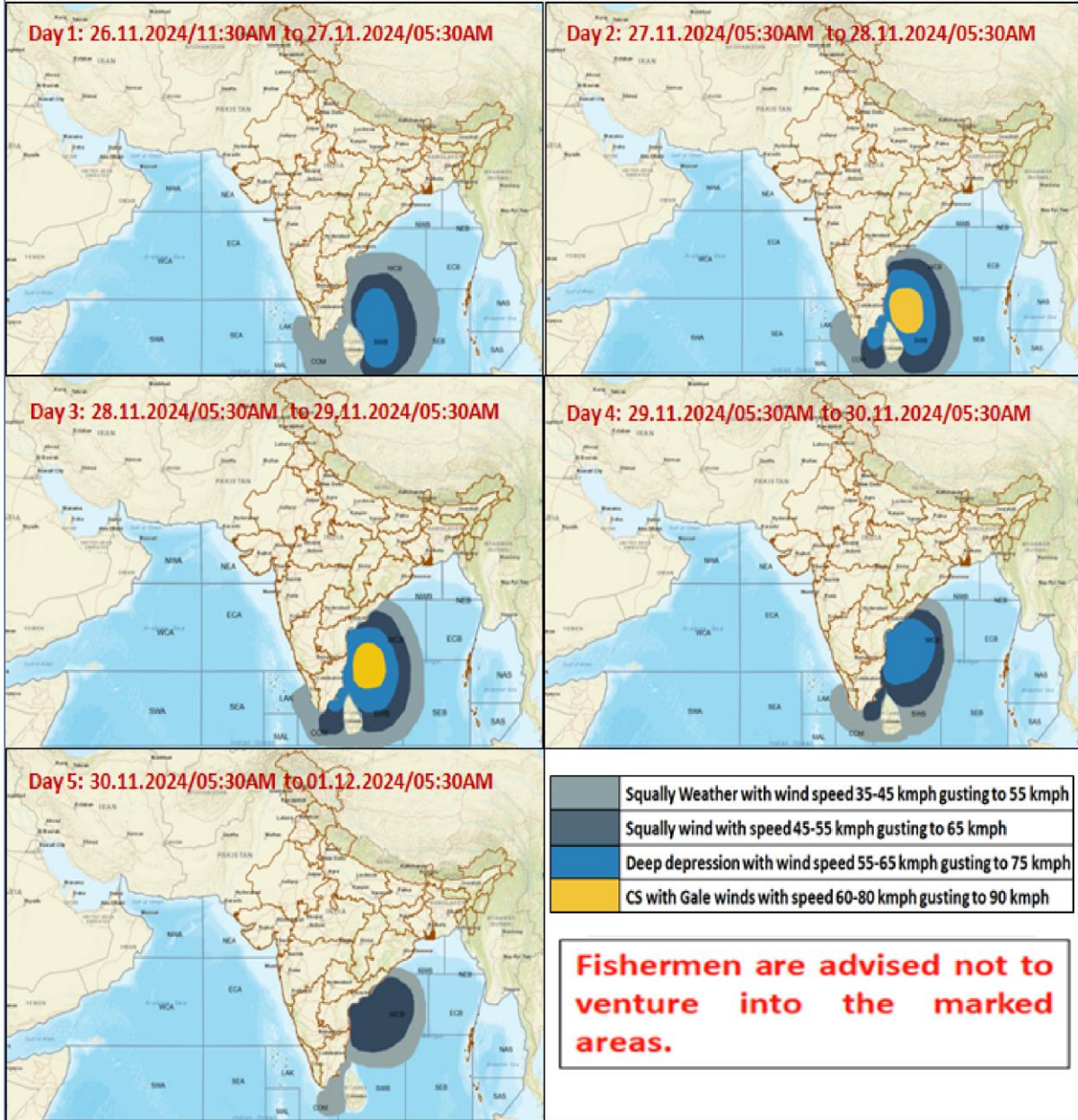
**Contact:** Cyclone Warning Division, Office of the Director General of Meteorology, India Meteorological Department, Ministry of Earth Sciences, E-mail: [cyclonewarningdivision@gmail.com](mailto:cyclonewarningdivision@gmail.com), Website: [rsmcnewdelhi.imd.gov.in](http://rsmcnewdelhi.imd.gov.in), Spatial rainfall distribution: Isolated: <25%, A few: 26-50%, Many: 51-75%, Most: 76-100%, Rainfall amount (mm): Heavy rain: 64.5 – 115.5, Very heavy rain: 115.6 – 204.4, Extremely heavy rain: 204.5 or more.



**Contact:** Cyclone Warning Division, Office of the Director General of Meteorology, India Meteorological Department, Ministry of Earth Sciences, E-mail: [cyclonewarningdivision@gmail.com](mailto:cyclonewarningdivision@gmail.com), Website: [rsmcnewdelhi.imd.gov.in](http://rsmcnewdelhi.imd.gov.in), Spatial rainfall distribution: Isolated: <25%, A few: 26-50%, Many: 51-75%, Most: 76-100%, Rainfall amount (mm): Heavy rain: 64.5 – 115.5, Very heavy rain: 115.6 – 204.4, Extremely heavy rain: 204.5 or more.



### Fishermen Warning Graphics



Contact: Cyclone Warning Division, Office of the Director General of Meteorology, India Meteorological Department, Ministry of Earth Sciences, E-mail: [cyclonewarningdivision@gmail.com](mailto:cyclonewarningdivision@gmail.com), Website: [rsmcnewdelhi.imd.gov.in](http://rsmcnewdelhi.imd.gov.in), Spatial rainfall distribution: Isolated: <25%, A few: 26-50%, Many: 51-75%, Most: 76-100%, Rainfall amount (mm): Heavy rain: 64.5 – 115.5, Very heavy rain: 115.6 – 204.4, Extremely heavy rain: 204.5 or more.